

Press Release
January 2022

20 Cork Street
W1S 3HL +44 (0)20 7734 1732
redfern-gallery.com

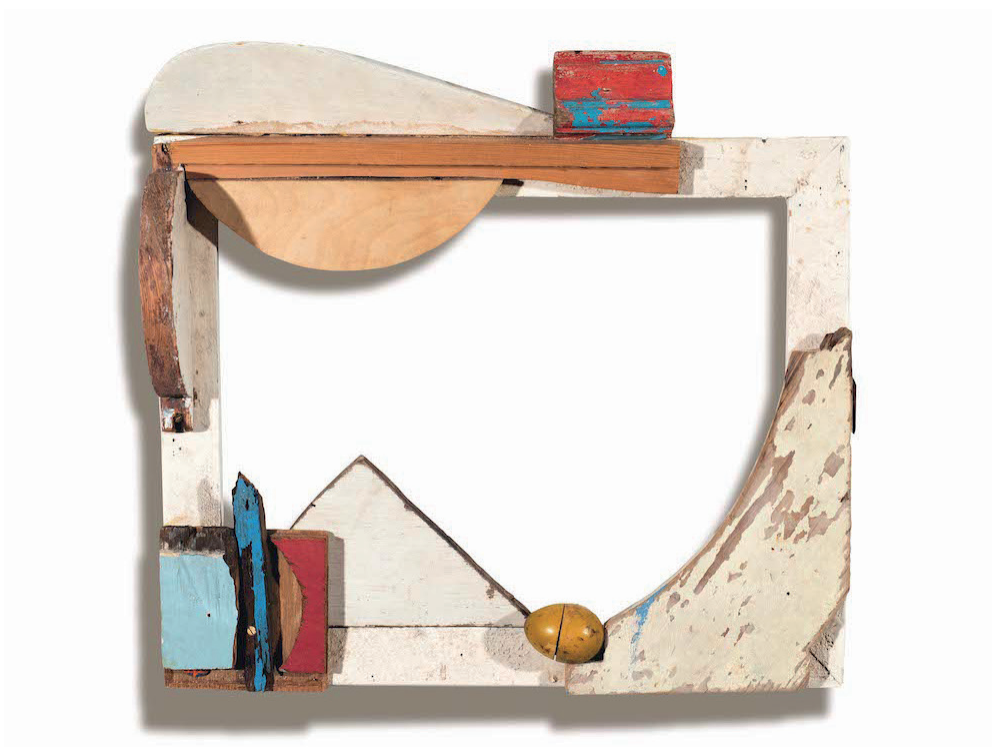
**The
Redfern
Gallery**

Established 1923

Margaret Mellis: Modernist Constructs

8 - 26 February 2022

Preview Week: 8 - 12 February



Cucu 1985 (reworked in 2001) Driftwood construction 38 x 41 cm

To celebrate her recent retrospective, The Redfern Gallery are delighted to announce the continuation of *Margaret Mellis: Modernist Constructs*, opening Tuesday 8 February 2022. Previously on display at Towner Eastbourne, this exhibition includes an array of drawings, paintings and driftwood constructions by Margaret Mellis, demonstrating her intuitive technique in her largest, most established exhibition yet.

In the late 1970s, Margaret Mellis began to keep pieces of driftwood she found during her walks along the Suffolk coast. She selected them with an artist's eye, for their qualities of shape or colour, and collected them as she collected other things in her house: old keys, pieces of board and wooden trays, bits of glass, the skins of oranges and grapefruits crisp from drying on the Aga. Everything was kept with a future purpose in mind, could take on new life. Keys for collages; fruit peel for lighting fires.

Accompanied by a fully illustrated catalogue with an essay by Harriet Baker

About Margaret Mellis

Born in 1914, in China, Margaret Mellis and her family returned to Scotland soon after her birth. Notable for her skills as a young pianist, she was a natural creative and later studied at Edinburgh College of Art, where she learnt alongside Wilhelmina Barns-Graham and William Gear. In 1933, Mellis was awarded a scholarship to study in Paris, where she met her first husband, Adrian Stokes. In 1938, the threat of war forced the young couple to move to St Ives, Cornwall, with Ben Nicholson and Barbara Hepworth, where Mellis' exploration on collage and relief started. Mellis was one of the first members of the group of modernist artists that gathered in St Ives, Cornwall, and played an important role in the reputation of St Ives as a focus for artists. She later married Francis Davison and mentored a young Damien Hirst after he was 'blown away' by her work at an exhibition at The Redfern Gallery.

About The Redfern Gallery

Founded in September 1923, The Redfern Gallery is one of the longest-established dealers of Modern British and Contemporary art in London. Today, The Redfern Gallery represents over 30 contemporary artists and artists' estates.

Exhibition dates:
8 – 26 February 2022

Preview Times

The gallery will be hosting a preview week between 8 – 12 February.

Tuesday 8 February 4pm - 8pm
Wednesday 9 February 11am - 5.30pm
Thursday 10 February 11am - 5:30pm
Friday 11 February 11am - 5:30pm
Saturday 12 February 11am - 2pm

Press Enquiries

Follow The Redfern Gallery on social media:

Twitter: @RedfernGallery

Facebook: @redferngallery

Instagram: @theredferngallery

Contact

info@redfern-gallery.com

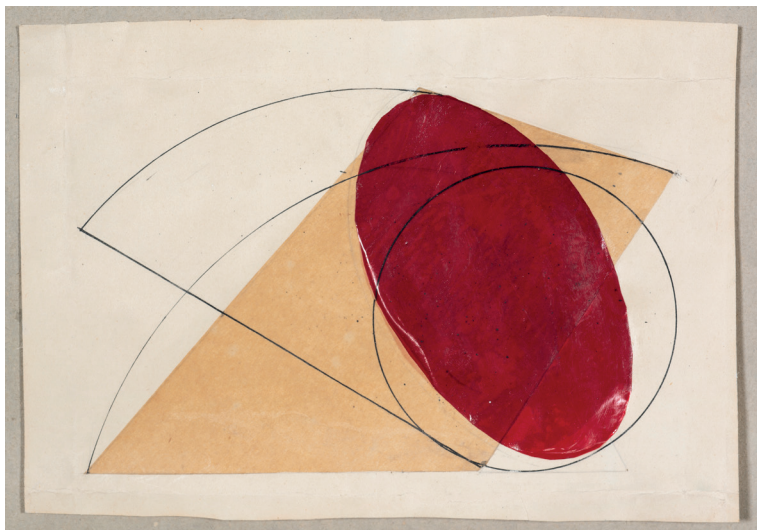
T +44 (0)20 77341732

20 Cork Street, London, W1S 3HL

www.redfern-gallery.com



Black Leaves in Blue Bottle c.1990 Crayon on envelope 31 x 24cm



Construction with Red Oval 1942 Mixed media and collage on paper 13 x 19cm