

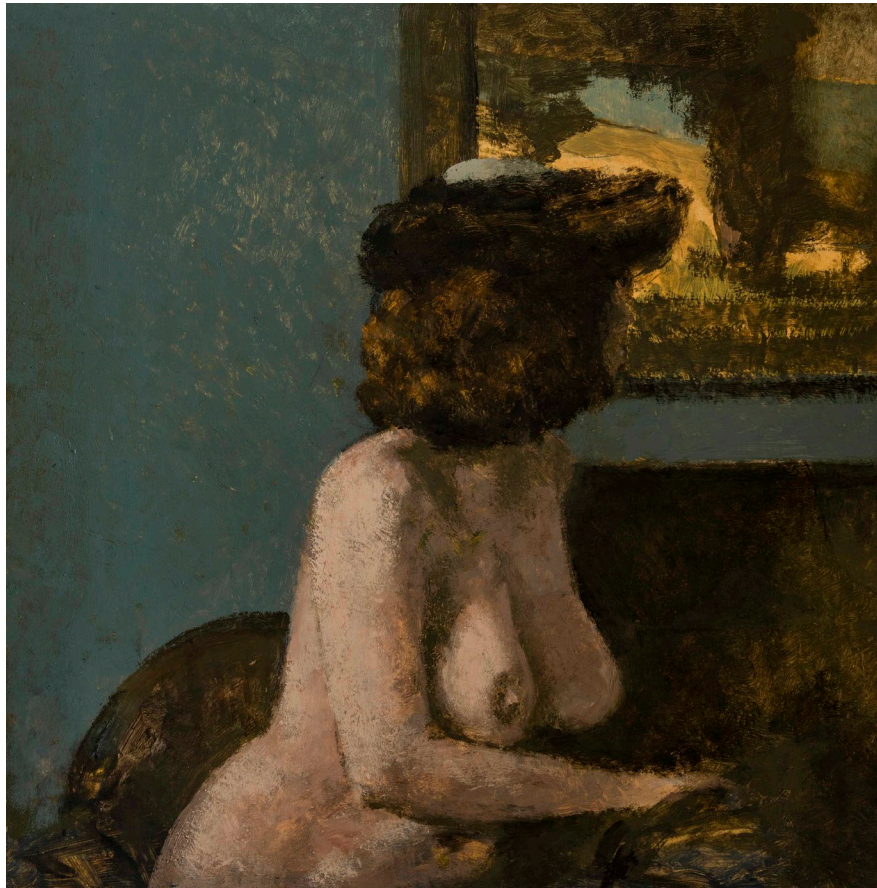
DAVID INSHAW: NAKED

THE REDFERN GALLERY

15 June - 15 July 2022

Private View: 14 June, 6-8pm

The Redfern Gallery is pleased to announce the forthcoming exhibition *David Inshaw: Naked*. This exhibition comprises a selection of paintings and drawings of the female form from 1960 to the present day. Inshaw's photographs - a crucial element in his creative process - will also be shown for the first time in over 40 years.



David Inshaw, *Julia in a Hat*, 2020, Oil on canvas, 32 x 32 cm

'The raw material is translated into a painted image, the act of rendering it into paint transforming it still more. Memory and imagination play their part: the photos are only ever a starting point, not a source to be literally transcribed.'

- Andrew Lambirth

Exhibition accompanied by a two fully illustrated catalogues with essays by Andrew Lambirth

About David Inshaw

After a first solo show, at the Arnolfini Gallery in 1969, and inclusion in several Arts Council touring exhibitions during the early '70s, David Inshaw became a household name almost overnight, following the sale of the *The Badminton Game* to the Tate Gallery, in 1973. Over five decades on, and this enigmatic painting remains one of the Tate's most popular 20th century paintings. Work from this period simmered with a psychological drama between the human figures and the landscape, creating a distinctive sense of mood and mystery. The painting was reproduced in Edward Lucie-Smith's seminal article in *The Sunday Times*; entitled 'New British Artists', the article described Inshaw as marking a move away from the Pop Art of the previous decade, towards an art that was more "tranquil" and "affectionate in tone".

Inshaw's paintings have appeared in various museum survey shows around the world, with recent examples being *British Art: Ancient Landscapes*, at Wiltshire Museum in 2017, and *The Landscape in Art 1690-1998*, drawn from the Tate's permanent collection. His paintings are in the Tate, Arts Council and British Council, among others, while examples of his printmaking are in the British Museum. In addition to landscapes, Inshaw has also taken on portrait commissions, and was one of sixteen leading artists to contribute a portrait to the album *Face Dances* by The Who, in 1981, along with Peter Blake, RB Kitaj, Richard Hamilton and David Hockney.

David Inshaw continues to live and work in Wiltshire today, and will be returning to The Redfern Gallery for his second solo exhibition in June this year.

About The Redfern Gallery

The Redfern Gallery was founded in 1923 at Redfern House, 27 Old Bond Street, London W1. The gallery moved to its current premises 20 Cork Street in 1936. It is one of the longest-established dealers of Modern British and Contemporary art in London. The Redfern Gallery represents over 30 contemporary artists and artists' estates. It also has an extensive stock of modern and contemporary paintings, drawings, watercolours, sculpture and original prints.

Press Enquiries

Follow us on social media at:
Twitter: @RedfernGallery
Facebook: @redferngallery
Instagram: @theredferngallery

Contact

info@redfern-gallery.com
T +44 (0)20 77341732
www.redfern-gallery.com
20 Cork Street, London, W1S 3HL



David Inshaw, *Robin by Candlelight 2*, 1978, Photograph, 15.2 x 15.2cm

**The
Redfern
Gallery**

Established 1923